



Guru Ghasidas Vishwavidyalaya
Green University Policy

Introduction

Global environmental and climatic changes affect the ecosystem functioning, which in turn are responsible for the loss of biodiversity, changes in hydrological systems, disruption in supply of freshwater, land degradation, intrusive urbanization, and stresses on food-producing systems. A Green Policy is a statement about the commitment to sustainability and effective management of natural resources that any organization is prepared to make and a declaration about the commitment to green and clean environment. A significant economic benefit of going **green** is that it helps lower costs and saves money. For example, the use of renewable energy helps to reduce energy costs.

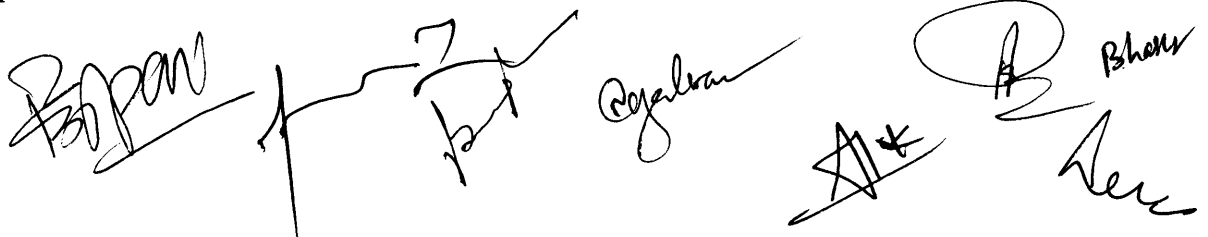
A sustainable university has been defined as one that addresses, involves, and promotes, on a regional or global scale, the reduction of negative environmental, economic, societal, and health effects associated with the use of its resources in order to fulfill its functions of teaching, research, outreach and partnership, and stewardship in ways that assist society in making positive changes. The Green University Policy is crafted to transform the institution as a sustainable one, using multiple approaches in order to promote bio-diversity, clean environment and reduce carbon credit through efficient use of energy so as to provide a conducive academic ambiance to learners.

The green policy encompasses the promotion and protection of bio-diversity, initiating efforts towards clean environment and implementing efficient energy processes to reduce carbon credit on campus.

Policy Objective

To develop and maintain a clean, green, plastic free and low carbon foot prints sustainable campus at Guru Ghasidas Vishwavidyalaya, Bilaspur. The Vishwavidyalaya is committed to following efforts:

- To maximize the wider positive impact of the university's environmental sustainability actions at local, national and international level through communication, collaboration and partnership.
- To create a culture where the University community is engaged, empowered and supported in improving their personal and collective efforts for green and clean campus



Handwritten signatures of five individuals, likely representing the university's commitment to the green policy. The signatures are written in black ink and are arranged horizontally across the bottom of the page. From left to right, the signatures are: a stylized signature, a signature with a large 'Z' or '7' shape, a signature that appears to be 'Rajalwan', a signature with a large 'A' and a star, and a signature that appears to be 'Bhans'.

- To promote use of low-cost and energy efficient electrical devices for reducing the power consumption.

To establish clean development mechanisms for conservation of biodiversity, reduction of carbon emission and creating a green environment.


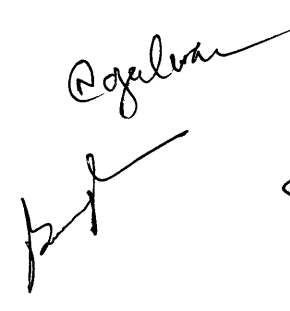

Policy Areas

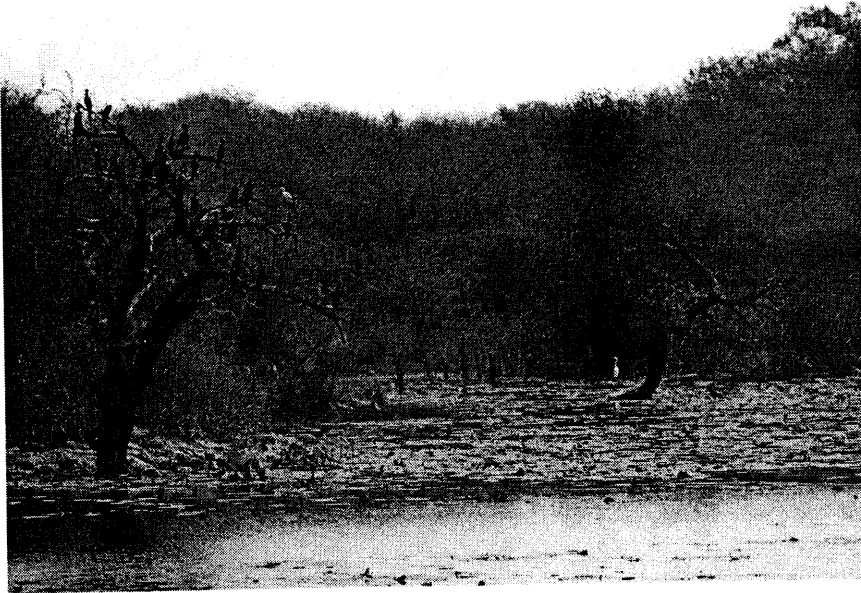
- **Bio-diversity**

- **Biodiversity Conservation and Eco-system management**

To be a sector leader in mitigating negative impacts and, where possible, enhancing direct and indirect benefits to biodiversity and natural ecosystems. The university is taking the following steps:

- The campus has ample green cover of over more than 50 percent which is a refuge for different kinds of flora and fauna.
- Regular monitoring of campus biodiversity is being done by the university students/staff.
- Habitat loss is kept in mind while constructing new buildings so that anthropogenic pressure can be minimized on fauna and flora.
- Plantation programs are promoted through various environmental days, special occasions where students and staff are encouraged to participate in planting of saplings.
- Encouragement is given to develop medicinal plants garden, miscellaneous forest plantation areas, road side plantations, and horticulture garden to conserve flora and fauna of the campus.

Pratap  *Rajulva*   *A. Bhans*



Water bodies on campus help in conserving water as well as a habitat for fauna.

Photo by: Fergus Mark Anthony

•Water Conservation

The following measures are being taken:

- Newly constructed buildings are being equipped with roof water harvesting systems.
- Water harvesting systems have been made available throughout the campus to minimize surface runoff and to store maximum amount of rain water.
- Stone walls and check dams are also constructed to reduce water loss.
- Proper management of available water bodies through deepening, stone pitching, raising the bund height etc. within the campus.
- Checkdams have been erected in few places in order to conserve the overflow of water from the available water bodies.

• Paperless work:

- The university has adopted purchase of the goods and services through E-tendering using GeM portal, Government of India, and has been continuing the declaration of results through Integrated University Management System (IUMS), PFMS for Financial Management to reduce the file/paper work.

[Handwritten signatures and initials]

- University is providing all support services to both teaching and non-teaching departments in various forms so as to ensure paper less works.

- To collaborate with suppliers to develop an ecosystem that promotes sustainable resource supply.

- **Clean Environment**

- **There will be a focus on clean environment with thrust on the following:**

Energy Efficient Process

To reduce consumption of conventional energy while supporting the University's plans for growth in research activity, staff and student numbers. The university is implementing measures to conserve energy by:

- Promoting the replacement of conventional light bulbs with LED's in administrative, teaching and residential buildings.

- Promoting '*Switch off when not in use*', where students, teachers and staff members are advised to switch off electrical appliances after use.

- Newly constructed buildings to be fitted with solar system compulsorily.

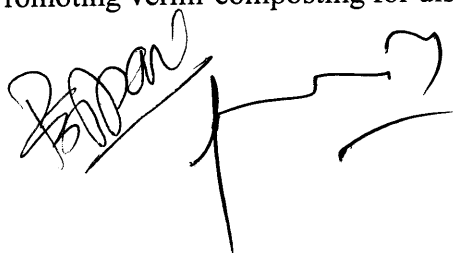
- Promoting the setting up of solar power plant in the campus to reduce its dependency on conventional energy.

- Waste management**

- Promoting the 3-R (Reduction, Reuse and Recycling) concept throughout the university.

- Setting up of a waste management plant for safe disposal of solid and liquid waste in the campus.

- Promoting vermi-composting for disposal of biodegradable waste.



- Continuing the disposal of E-waste through buyback policy of various electronic components.

- Partnership, engagement, awareness and training**

To enable staff and students to develop and share their knowledge, skills, and experience in order to effectively engage with and contribute to the University's environmental sustainability aspirations, the following steps are being taken:

- Spreading awareness about environment conservation and sustainable development among students and staff through different programmes sponsored by Ministry of Education and UGC.

- University has a curriculum for undergraduate students with environmental education as a part of creating awareness and training of students.

- Regular trainings and workshops are being organized for empowering and educating students towards environmental management and energy efficiency.

- Formal and informal collaborative partnerships are encouraged with regional, national and international stakeholders.

- Digitalization is in practice for minimizing the use of paper in official work in the university.

- **Reduction of Carbon Footprint**

- Sustainable construction and refurbishment of university estate**

To increase the environmental sustainability and to reduce the impacts of our construction and refurbishment projects, the following steps are taken:

- No construction, refurbishment or maintenance work on campus has a net negative impact on biodiversity, which reflects the possible net positive impact.

- University has constructed three buildings viz., Department of Forestry, Wildlife and Environmental Sciences, Department of Biotechnology, Department of Botany, and Department of Rural Technology & Social Development, which are energy efficient in order to reduce the non-renewable energy recourse. Furthermore, six other energy

Handwritten signatures and initials at the bottom of the page, including names like 'Rajalok', 'A', and 'Bhaskar'.

efficient buildings are under construction as per the Green Rating for Integrated Habitat Assessment (GRIHA) guidelines.

•**Transport system**

To provide viable and accessible sustainable transportation options for faculty, staff, and students to and from work, as well as intra-campus travel, thereby reducing carbon emissions.

•Promoting reduction of carbon footprint through measures like walking on foot, use of bicycles, and minimal use of automotive vehicles within the campus premises.

•Promoting the battery operated vehicle in the campus.

•Promoting and motivating less generation of waste in offices and residential areas.

Handwritten signatures and initials:
Zaman
[Signature]
[Signature]
Rajwan
[Signature]
[Signature]
[Signature]